



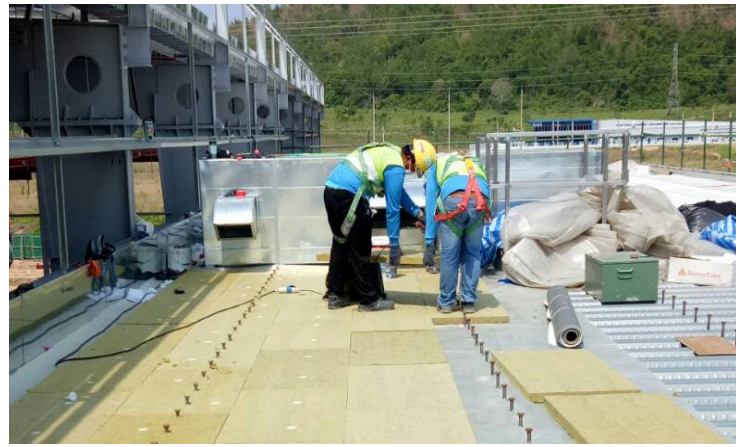
SIKA AT WORK AT BROSE (THAILAND)

ROOFING: Sarnafil®

BUILDING TRUST



Sarnafil® AT BROSE (THAILAND)



PROJECT DESCRIPTION

Brose (Thailand), plant located at Eastern Seaboard Industrial Estate, Rayong. The plant in Thailand develops and produces mechatronic systems for vehicle doors and window.

Project name: Brose (Thailand)
Location: Rayong
Construction year: March 2020
Year to complete : May 2020
Size in m²: 700 m²

PROJECT REQUIREMENT

Metal deck roof. The customer want to use PVC membrane by using Sika Sarnafil® solution.

Our most current General Sales Conditions shall apply.
Please consult the Data Sheet prior to any use and processing.



SIKA (THAILAND) LIMITED

700/37 Moo 5, Amata City Chonburi
Industrial Estate, Km. 57, Bangna - Trad Rd.
T. Klong Tamhru, A. Muang, Chonburi 20000

Contact

Phone +66 3810 9500
Fax +66 3821 4286
Website: tha.sika.com

SIKA SOLUTION

Sarnafil® S 327-15 L mechanical fasten on metal deck with mineral wool insulation.

PROJECT PARTICIPANTS

Applicator: PASSAWARN CO.,LTD.

SIKA ORGANIZATION

Target Market Roofing, Building System Sika Thailand